



Maltings Close, London, E3

BUTLER & STAG



A centrally located two double bedroom apartment with two bathrooms and a private balcony overlooking the canal.



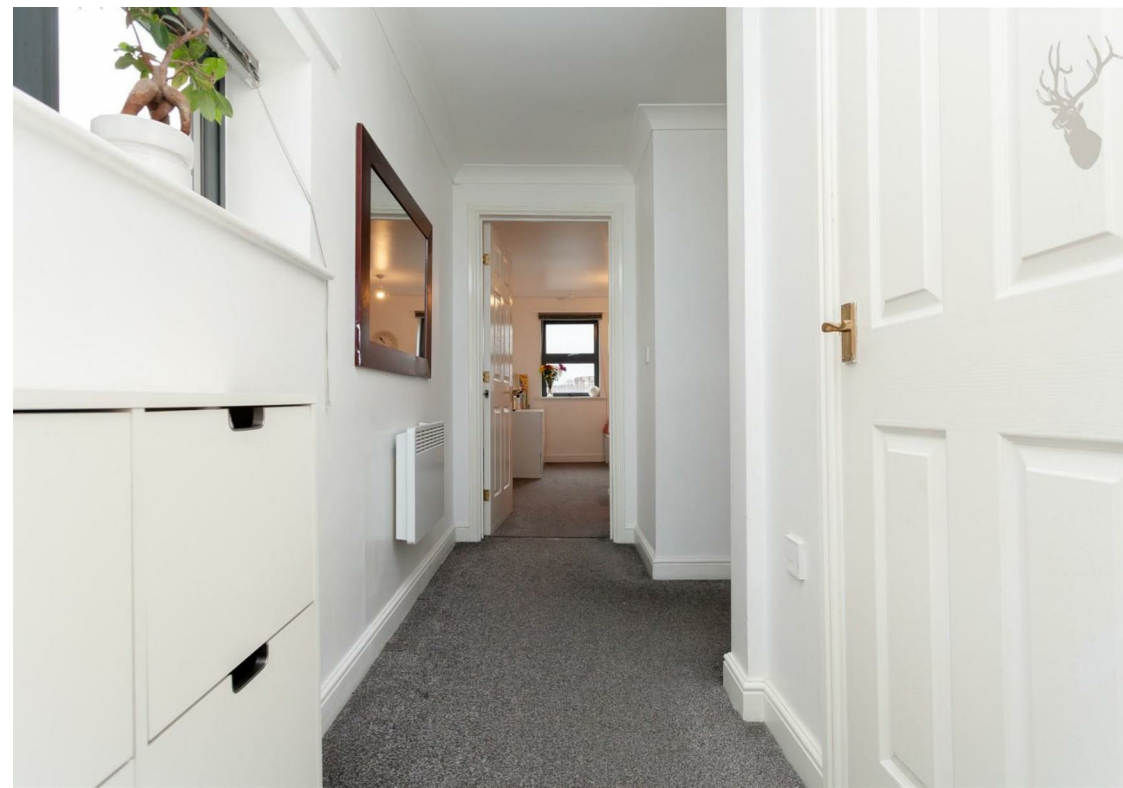
- Two Bedrooms
- Two Bathrooms
- Close To Transport
- Canal Views
- Private Balcony
- Modern Kitchen
- Available 20th May 2023
- Part Furnished

Situated in a modern private development, this two-bedroom, two-bathroom apartment gives a great location and open light space with a private balcony overlooking the canal.

Comprising of two double bedrooms, a family bathroom, en-suite to the master bedroom, modern kitchen and a light open living space, this apartment also benefits from a corner private balcony giving views over the waterway of the canal.

Being located close to transport and walking distance to Bromley-by-Bow underground station makes this the perfect home.





IMPORTANT NOTICE - These particulars have been prepared in good faith and they are not intended to constitute part of an offer or contract. We have not performed a structural survey on this property and the services, appliances and specific fittings have not been tested. All photographs, measurements, floor plans and distances referred to are given as a guide and should not be relied upon.

A large, dark blue silhouette of a stag's head with prominent antlers, facing left, serves as a background for the contact information on the right side of the page.

BUTLER & STAG

☎ 020 8102 1236

🏠 508 Roman Road, Bow, London, E3 5LU

✉ bow@butlerandstag.com

www.butlerandstag.uk